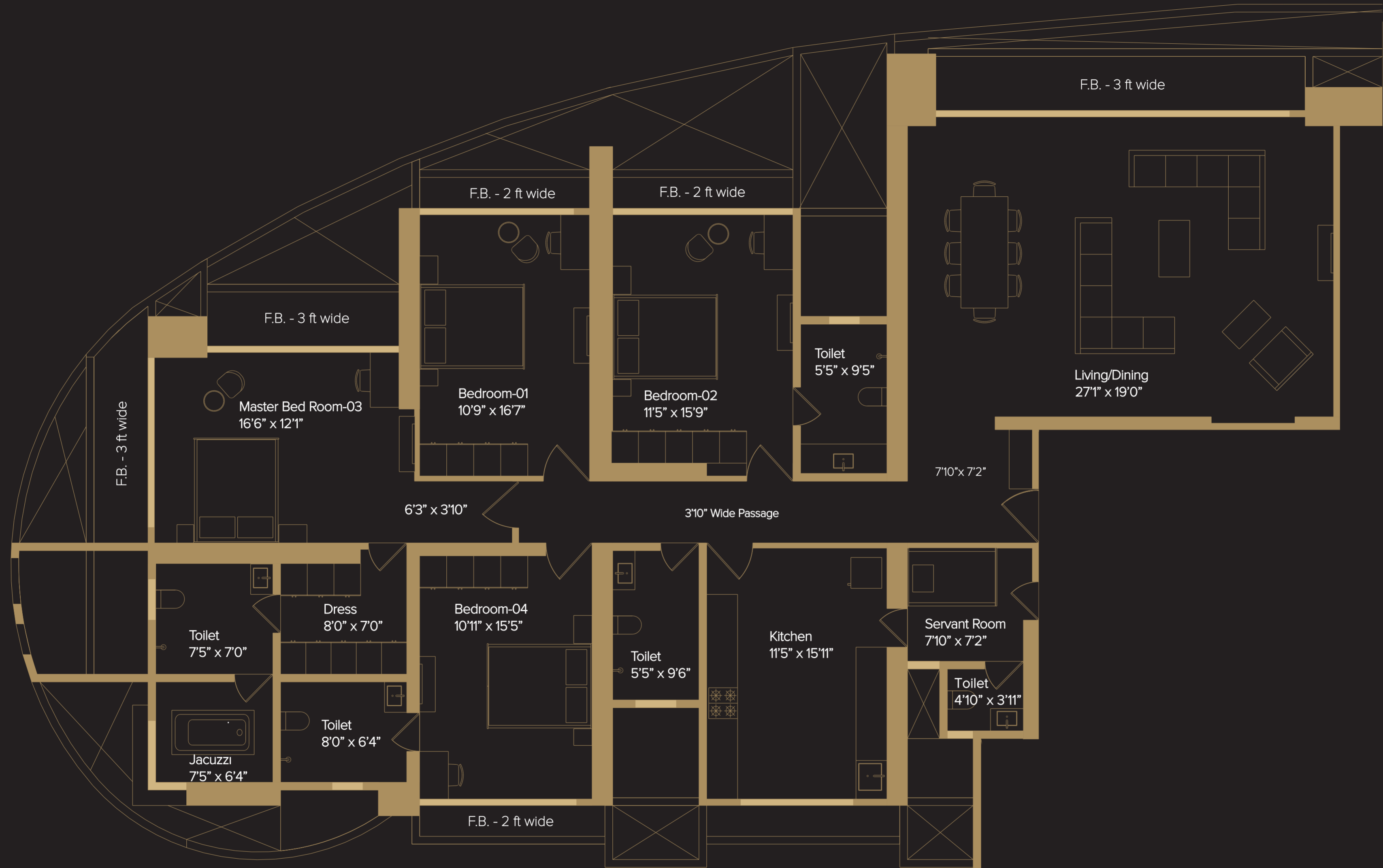
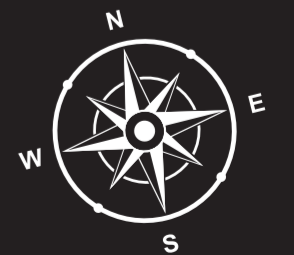


**MARATHON**  
**Monte Carlo**  
Mulund (W)

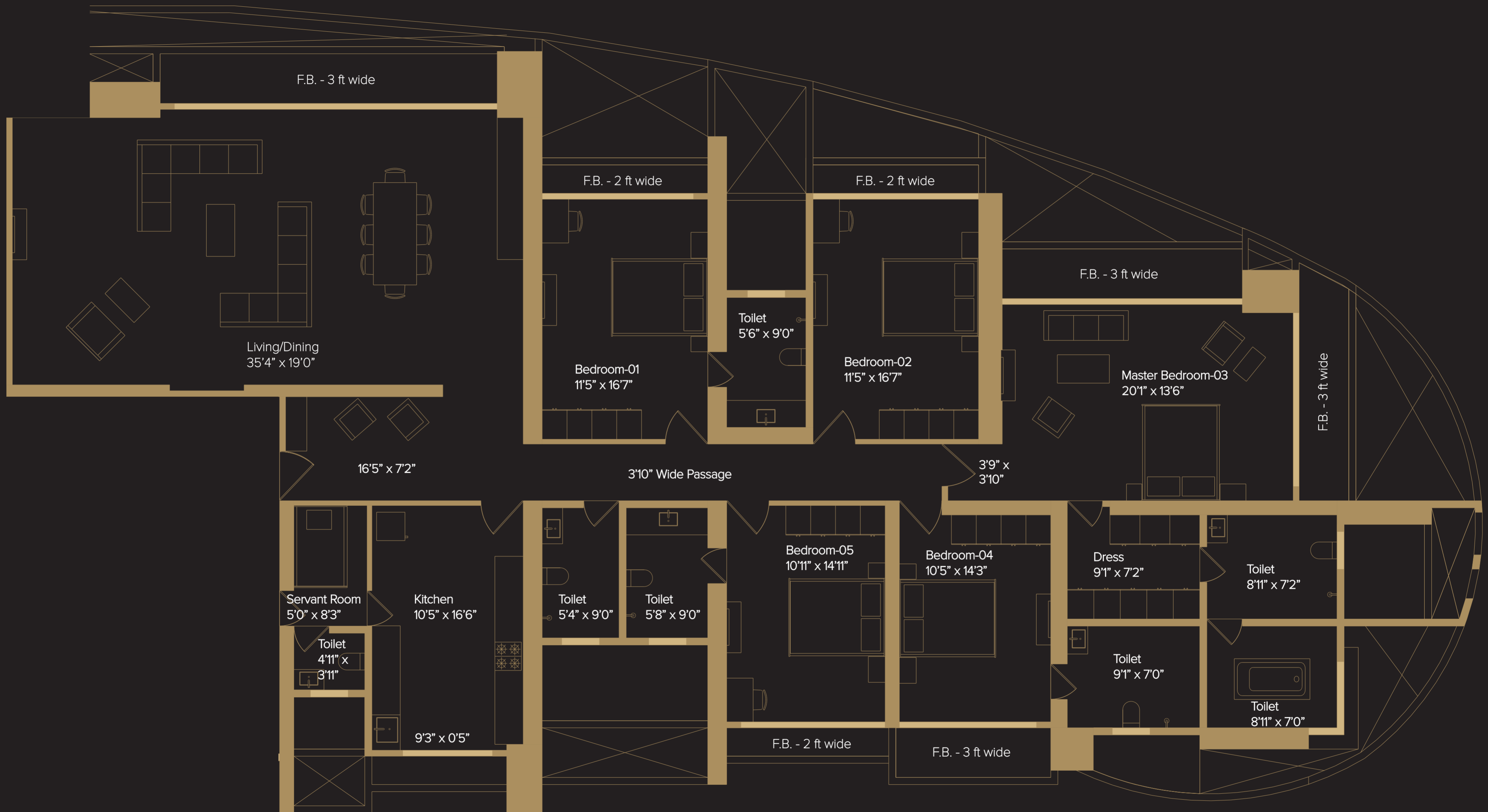
Floor Plans



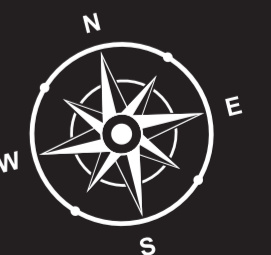
4 BHK  
2009 sq.ft.



Disclaimer - The picture of the proposed residential flat and all furniture, items, electronic goods, amenities etc specified therein are only for the purpose of show casing the residential flat and the Developer shall not be required to provide any furniture, items, goods, amenities etc as displayed in the picture/s. All plans, specifications, dimensions, designs, measurements are indicative and are subject to change. All plans are subject to modifications / alterations / changes as per suggestions of the Architect or local authorities. Minor variations upto +/- 3% in actual carpet areas may occur on account of site conditions / columns / finishes etc. Building design and amended plans are subject to approval from concerned authorities.



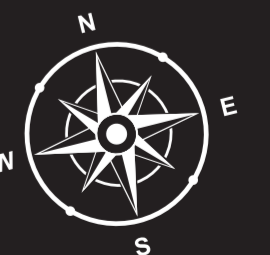
**5 BHK**  
2547 sq.ft.



Disclaimer - The picture of the proposed residential flat and all furniture, items, electronic goods, amenities etc specified therein are only for the purpose of show casing the residential flat and the Developer shall not be required to provide any furniture, items, goods, amenities etc as displayed in the picture/s. All plans, specifications, dimensions, designs, measurements are indicative and are subject to change. All plans are subject to modifications / alterations / changes as per suggestions of the Architect or local authorities. Minor variations upto +/- 3% in actual carpet areas may occur on account of site conditions / columns / finishes etc. Building design and amended plans are subject to approval from concerned authorities.



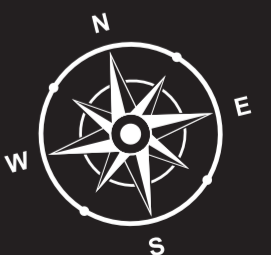
4 BHK  
2312 sq.ft.



Above 17th Floor

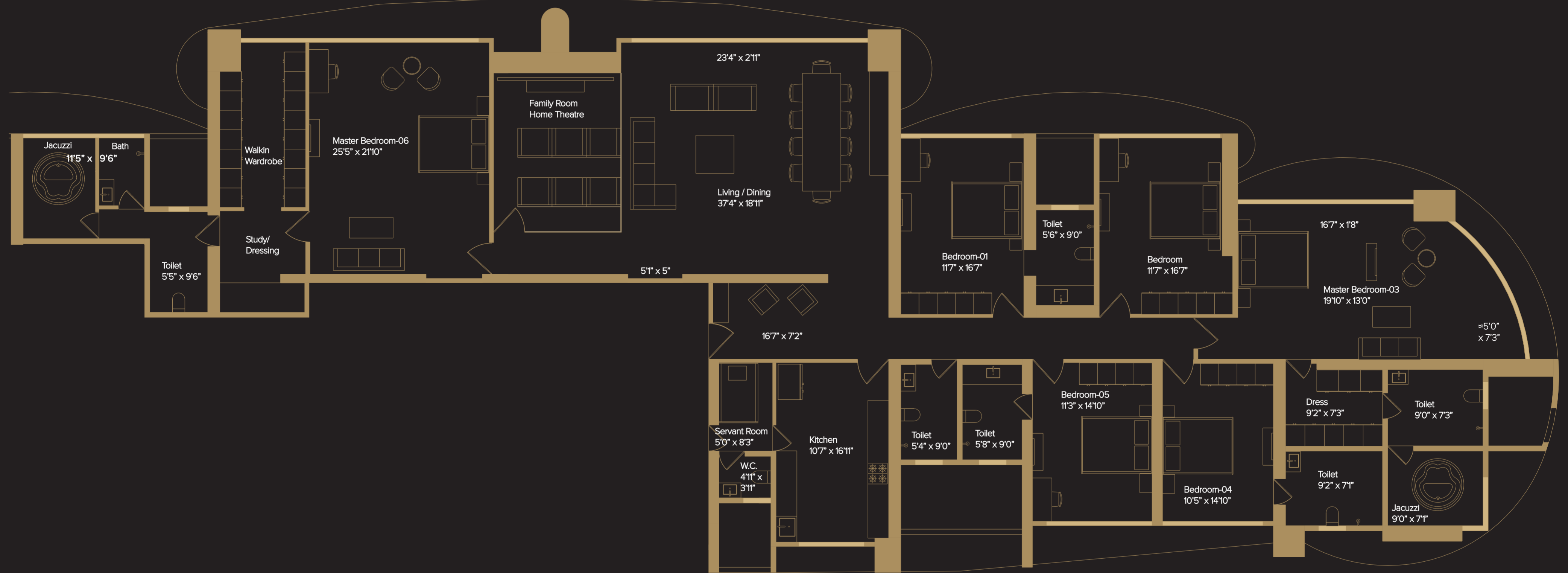


5 BHK  
2930 sq.ft.

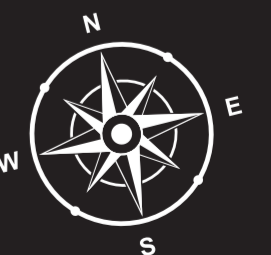


Disclaimer - The picture of the proposed residential flat and all furniture, items, electronic goods, amenities etc specified therein are only for the purpose of show casing the residential flat and the Developer shall not be required to provide any furniture, items, goods, amenities etc as displayed in the picture/s. All plans, specifications, dimensions, designs, measurements are indicative and are subject to change. All plans are subject to modifications / alterations / changes as per suggestions of the Architect or local authorities. Minor variations upto +/- 3% in actual carpet areas may occur on account of site conditions / columns / finishes etc. Building design and amended plans are subject to approval from concerned authorities.

20th to 27th Floor



6 BHK  
3741 sq.ft.



Disclaimer - The picture of the proposed residential flat and all furniture, items, electronic goods, amenities etc specified therein are only for the purpose of show casing the residential flat and the Developer shall not be required to provide any furniture, items, goods, amenities etc as displayed in the picture/s. All plans, specifications, dimensions, designs, measurements are indicative and are subject to change. All plans are subject to modifications / alterations / changes as per suggestions of the Architect or local authorities. Minor variations upto +/- 3% in actual carpet areas may occur on account of site conditions / columns / finishes etc. Building design and amended plans are subject to approval from concerned authorities.

